



@flexsonforsonos

To find out more about Flexson, please visit www.flexson.com
For product support contact: support@flexson.com or visit our website.

Flexson is a registered trademark of Exertis (UK) Ltd, 2022. Contact address: St George House, Parkway, Harlow Business Park, Harlow, Essex, CM19 5QF, UK. Sonos is a registered trademark of Sonos Inc.; see sonos.com. Flexson is not affiliated with Sonos Inc.

JB.0007-0422-0422



Sonos in your home

Inspiration and solutions

FLEXSON

ACCESSORIES FOR SONOS

Flexson is dedicated to high-quality accessories for Sonos

Our expert product designers are all Sonos lovers, devising innovative but practical solutions to help users of every Sonos product to get more from their sound system.

Flexson is based in England, with products available everywhere in the world.



Contents

Speakers

Wall Mount for Sonos ERA100	8/9
Floor Stand for Sonos ERA 100	10
Adjustable Floor Stand Sonos ERA 100	11
Desk Stand for Sonos ERA 100	12
Ceiling Mount for Sonos ERA 100	13
In Ceiling Mount for Sonos ERA 100	14
Security Fixing Kit for Sonos ERA 100	15
Wall Mount for Sonos ERA 300	16
Floor Stand for Sonos ERA 300	17
Adjustable Floor Stand Sonos ERA 300	18
Desk Stand for Sonos ERA 300	19
Ceiling Mount for Sonos ERA 300	20
Wall Mount for Sonos Move	21
Floor Stand for Sonos Move	22
Wall Mount for Sonos FIVE and Play:5	23
Floor Stand for Sonos FIVE and Play:5	24

Home Cinema

Wall Mount for Sonos Arc	26
TV Mount Attachment for Sonos Arc	27
Wall Mount for Sonos Beam	28
TV Mount Attachment for Sonos Beam	29
Wall Mount for Sonos Ray	30
Wall Mount Attachment for Sonos Ray	31
Adjustable Floor Stand Sonos ERA 100	32
Adjustable Floor Stand Sonos ERA 300	33
Wall Mount for Sonos Sub	35

Audio Components

Wall Mount for Sonos Amp	38
Wall Mount for 4 Sonos Amps	39
Dock for 4 Sonos Amps	40
Wall Mount for Sonos Port	41
19" Rack Mount	42

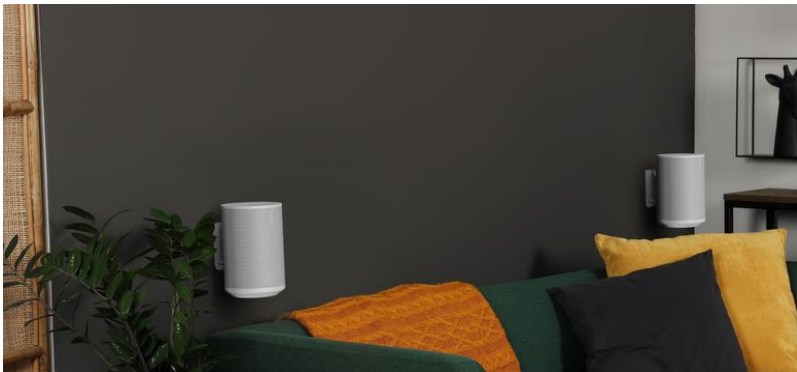
Cables

0.35M Power Cable for Sonos ERA, Five, Arc, Beam, Ray and Sub	46
5M Power Cable for Sonos ERA, Five, Arc, Beam, Ray and Sub	47

Speakers

From indoor speakers such as Sonos ERA100 to audio on the go with Sonos Move, Flexson has all the installation solutions to get the most from a wireless Sonos speaker.





Wall Mount for ERA 100

Flexson's bespoke bracket for the Sonos ERA 100 allows you to wall mount your speaker in the ideal place to sound - and look - great. This design gives you more flexibility and functionality.

- Quick and easy assembly
- Designed to colour match your Sonos speaker
- Crafted specifically to support the Sonos Era 100 speaker
- Corner mounting adaptor included
- Can be inverted to hold the speaker upside down
- Unique tilting mechanism and 80 degrees swivel
- Precision engineered in the United Kingdom
- Fixing hardware included for brick/masonry and brick/studwork



Corner piece Wall Mount for ERA 100

The Flexson Corner Mount for Sonos ERA100 allows you to mount your speaker in the corner of the room. Supplied with ERA100 Wall Mount but also available separately for use with older Flexson Sonos One/Play wall mounts. This new, design gives you more functionality and is included in with the ERA 100. It's ideal for commercial installs in bars, restaurants and shops, as well as for home use.

- Unique corner fitting adapter plate for 90-degree corners





Floor Stand for ERA 100

The Flexson Floor Stand is built to hold your Sonos Era 100 speaker at the ideal listening height. When upright, this stand has room to accommodate both the power and network cable if required, with neat routing for both at the base.

- Built at optimum listening height
- Quick and easy assembly
- Designed to colour match your Sonos speaker
- Integrated cable track for neat cable management
- Weighted base for enhanced stability
- Crafted specifically to support the Sonos Era 100 speaker
- Includes power extension cable - gives you extra reach to mains plug sockets
- Includes adjustable carpet spikes and sound isolating feet
- Constructed from aluminium and high-grade steel
- Precision engineered in the United Kingdom
- Available in black and white



2x Essentials Adjustable Floor Stand for Sonos ERA 100

The Flexson Adjustable Floor Stands for Sonos Era 100 can hold the speaker at a range of heights, allowing them to adapt to a range of potential Sonos set-ups. Whether you need to hold your speakers lower or higher than a standard floor stand would, the Flexson Adjustable Floor Stands are ready to serve, in style. They come in a twin pack: ideal for setting your speakers up as a stereo pair or as the left/right rear speakers in a surround-sound set-up with a Sonos Arc, Beam or Ray.

- Compatible with Sonos ERA 100
- Adjustable height for positioning anywhere
- Perfect for use in a 5.1 surround sound set-up
- Includes adjustable carpet spikes and sound isolating feet
- Designed to neatly hide cable entry
- Constructed from high grade steel
- Precision engineered in the United Kingdom
- Available in black or white





Desk Stand for Sonos ERA 100

The Flexson Desk Stand for the Sonos ERA 100 speaker is a compact, clever design that angles sound to your ear, minimises vibration and adds a stylish flair. This beautifully styled solution doesn't mean sacrificing space. Ideal for use on desks, tables, bedside cabinets, kitchen worktops, coffee tables and anywhere else in the house you want to enjoy your speaker.

- Compatible with Sonos ERA 100
- Perfect for use in any room
- Speaker stand angles sound to your ears
- Provides optimal support for your speaker
- Fully assembled
- Sound isolating feet
- Precision engineered in ABS and high-grade steel
- Available in black or white

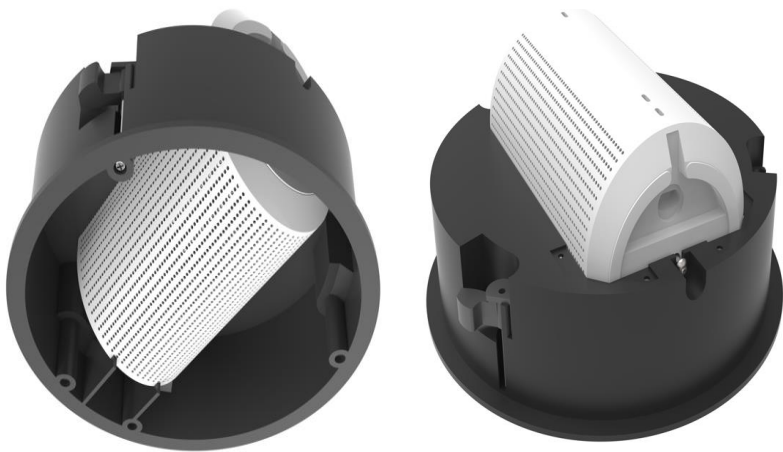


Ceiling Mount for Sonos ERA 100

The Flexson Ceiling Mount for Sonos ERA100 allows you to hang your speaker from the ceiling in the ideal place to sound - and look - great. This improved design gives you yet more flexibility and functionality with clever cable routing to the ceiling. It's ideal for commercial installs in bars, restaurants and shops, as well as for home use.

- Angle the speaker exactly where you want it
- Designed to neatly hide cable entry
- Base seamlessly fits the speaker, holding it securely
- Tilts down 15 degrees, swivels up to 80 degrees (40 deg. Left and 40 deg. Right)
- Can be inverted to hold the speaker upside down
- Precision engineered in ABS and high-grade steel
- Available in black or white
- Available as a single, pair or quad mounting





In Ceiling Mount for Sonos ERA 100

The Flexson In Ceiling Mount for Sonos ERA100 allows you to securely place your speaker into the ceiling or wall almost making the speaker invisible. This new, design gives you yet more installation options. It's ideal for commercial installs in bars, restaurants and shops, as well as for home use. Era 100 can be angled 20 degrees to project the audio at the ideal listening angle

- Bespoke design securely holds the Sonos ERA 100
- Includes adaptor plates for Sonos One/Play One
- Seamlessly mount the ERA 100 into the ceiling or wall
- Holds a single Sonos ERA 100 with the ability to angle the speaker for optimum audio angle up to 20-degrees.
- Supplied with Round and Square Grill to suit the application
- Grilles can be painted to match the installation and are signal transparent for voice control
- Quick and Easy to fit

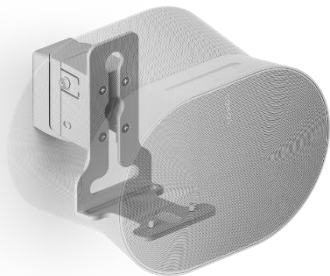


Security Fixing Kit for Sonos ERA 100

The Flexson Security Fixing for Sonos ERA100 allows you to secure your speaker to help prevent accidents and theft. Designed entirely to work with Flexson's Era 100 wall brackets only. This new, design gives you yet more safety and functionality. It's ideal for commercial installs in bars, restaurants and shops, as well as for home use. Converting Flexson's standard wall mount it allows a secure and safe installation of the Sonos Era 100 speaker for that extra piece of mind.

- Security fitting kit – only suitable for Flexson's ERA 100 Wall Mount
- Enables E100 to be securely installed to help prevent accidents and theft
- Stainless Steel cable, rated too: 70kg
- Replaces Flexson E100 Wall Mount Cover plate and allows secure fixing of speaker and bracket
- Available in black or white to perfectly match the Sonos Era 100





Wall Mount for ERA 300

Designed to perfectly fit the Sonos ERA 300, this Flexson wall-mount bracket is as strong as it is discreet. The bracket securely holds the speaker in landscape position, from where it can be swivelled and tilted to angle your music to the perfect listening position.

- Quick and easy assembly
- Designed to colour match your Sonos speaker
- Crafted specifically to support the Sonos Era 300 speaker
- Can be inverted to hold the speaker upside down
- Discreet design allows access to all controls
- Has a unique tilting mechanism (down 20°) plus can swivel up to 60° (30° left, 30° right), so you can perfectly angle your speaker
- Precision engineered for quality
- Fixing hardware included for brick/masonry and brick/studwork
- Available in black or white



Floor Stand for ERA 300

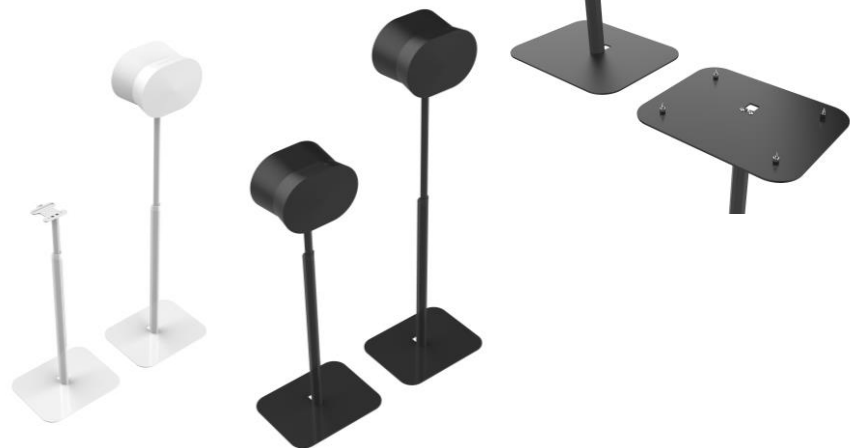
Designed to position the Sonos Era 300 at the ideal listening height, plus neatly hides away the speaker's power cable. It has a sturdy metal design, with a stable base that can slip under sofas or chairs if needed.

- Positions the speaker at the ideal height for seated listening
- Quick and easy assembly
- Designed to colour match your Sonos speaker
- Weighted base for enhanced stability
- Crafted specifically to support the Sonos Era 300 speaker
- Includes adjustable carpet spikes and isolating rubber feet for wood/tiled floors
- Clever cable management to keep things tidy
- Designed and engineered in the UK
- Available in black or white





Sonos ERA 300



Essentials Adjustable Floor Stand for ERA 300

The Flexson Adjustable Floor Stands for Sonos Era 300 can hold the speaker at a range of heights, allowing them to adapt to a range of potential Sonos set-ups. Whether you need to hold your speakers lower or higher than a standard floor stand would, the Flexson Adjustable Floor Stands are ready to serve, in style. They come in a twin pack: ideal for setting your speakers up as a stereo pair or as the left/right rear speakers in a surround-sound set-up with a Sonos Arc, Beam or Ray.

- Compatible with Sonos ERA 300
- Adjustable height for positioning anywhere
- Perfect for use in a 5.1 surround sound set-up
- Includes adjustable carpet spikes and sound isolating feet
- Designed to neatly hide cable entry
- Constructed from high grade steel
- Precision engineered in the United Kingdom
- Available in black or white





Desk Stand for Sonos ERA 300

The Flexson Desk Stand for the Sonos ERA 300 speaker is a compact, clever design that angles sound to your ear, minimises vibration and adds a stylish flair. This beautifully styled solution doesn't mean sacrificing space. Ideal for use on desks, tables, bedside cabinets, kitchen worktops, coffee tables and anywhere else in the house you want to enjoy your speaker.

- Bespoke design securely holds the Sonos Era 300
- Stylish speaker stand angles sound to your ears
- Provides optimal support for your speaker
- Perfect for office desk, kitchen, bedroom and living room
- Fully assembled
- Available in black or white to perfectly match the Sonos Era 300
- Precision engineered in ABS and high-grade steel
- Designed and engineered in the UK
- Sound and Vibration isolating feet



Ceiling Mount for Sonos ERA 300

The Flexson Ceiling Mount for Sonos ERA300 allows you to hang your speaker from the ceiling in the ideal place to sound - and look - great. This improved design gives you yet more flexibility and functionality with clever cable routing to the ceiling. It's ideal for commercial installs in bars, restaurants and shops, as well as for home use.

- Bespoke design securely holds the Sonos ERA 300
- Base seamlessly fits the speaker, holding it securely.
- Holds a single Sonos ERA 300 speaker 30cm below ceiling
- Clever cable management to keep things tidy
- Speaker can be inverted for access to controls if required
- Unique tilting mechanism (down 15° plus can swivel up to 80°(40° left, 40° right), so you can perfectly angle your speaker
- Designed and engineered in the UK
- Quick and easy to fit
- Supplied with Security cable
- Available in black or white





Wall Mount for Sonos Move

This Flexson Wall Mount for Sonos Move allows you to mount your Sonos Move safely and securely, both indoors or out, freeing up valuable surface space in your home or garden. By mounting the Sonos Move on a wall, you not only keep it safe from inquisitive toddlers and pets, but you can also position your speaker at the perfect height for enhanced sound projection. Like all Flexson products, the Flexson Wall Mount for Sonos Move is precision engineered in the UK, easy to fit and comes with all the fixings you need.

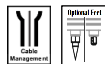
- Compatible with Sonos Move
- Suitable for use indoors or outdoors
- Precision engineered
- Quick and easy to fit
- Easy to mount and remove Sonos Move
- UV treated ABS to handle all climates
- Fixing hardware included for brick/masonry and brick/studwork
- Frees up space in your home
- Available in black or white



Floor Stand for Sonos Move

The perfect place to charge and listen to the Sonos Move. The speaker is held securely and is easily removed when you want to take it outside.

- Sonos Move charges while on floor stand
- Easy to mount and remove Sonos Move
- Ideal height for seated listening
- Quick and easy assembly
- Includes adjustable carpet spikes and sound isolating feet
- Designed to neatly hide cable entry
- Constructed from steel and aluminum
- Available in black or white





Wall Mount for Sonos Five and Play:5

Designed to perfectly fit the Sonos Five and Play:5, this Flexson wall-mount bracket is as strong as it is discreet. The bracket securely holds the speaker in landscape position, from where it can be swiveled (up to 30 degrees left or right) and tilted (up to 20 degrees down) to angle your music to the perfect listening position.

- Compatible with Sonos Five and Play:5
- Fixing hardware included for brick/masonry and brick/studwork
- Precision engineered
- Quick and easy to fit
- Tilts down 20 degrees, and swivels up to 60 degrees
- Built with high-grade steel and ABS
- Available in black and white



Floor Stand for Sonos Five and Play:5

Designed to position the Sonos Five and Play:5 at the ideal listening height, plus neatly hides away the speaker's power cable. It has a sturdy metal design, with a stable base that can slip under sofas or chairs if needed.

- Compatible with Sonos Five and Play:5
- Ideal height for seated listening
- Allows horizontal or vertical orientation of speaker
- Quick and easy assembly
- Includes adjustable carpet spikes and sound isolating feet
- Designed to neatly hide cable entry
- Constructed from steel and aluminum
- Available in black or white



Home Cinema

Flexson knows the value of really great home entertainment. Perfectly mount your Sonos configuration from Arc to Beam to Sub, and peripheral speakers, for the best home cinema experience.





Wall Mount for Sonos Arc

The Flexson Wall Mount for Sonos Arc allows you to install Sonos Arc quickly and easily onto any suitable wall. Its unique design positions the Sonos Arc 30mm in front of the TV, allowing you to harness the power of Dolby Atmos and immerse yourself in your music, movies and more. Like all Flexson products, the Flexson Wall Mount for Sonos Arc is precision engineered in the UK, easy to fit and comes with all the fixings you need.

- Position the Sonos Arc anywhere on the wall
- 30mm step to position speakers in front of the TV
- Optimised for Sonos Trueplay
- Multipoint fixing points
- 3 Part design for reduced packaging waste
- Precision engineered from high-grade steel
- Available in black or white



TV Mount Attachment for Sonos Arc

Designed to fit easily on to any existing TV wall mount, the Flexson TV Mount Attachment for Sonos Arc holds the Arc securely in place while allowing it to move with the screen. Flexson's unique design positions the Sonos Arc 30mm in front of the TV, allowing you to harness the power of Dolby Atmos and immerse yourself in your music, movies and more.

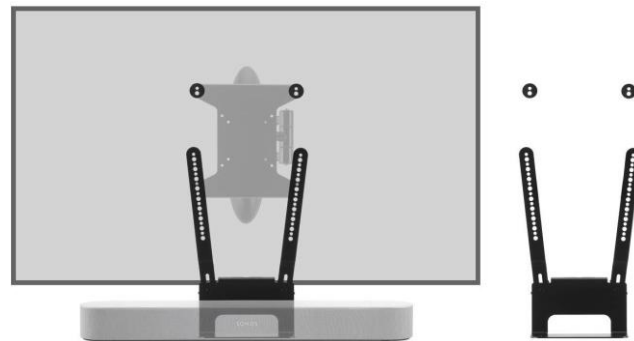
- Position the Sonos Arc on to any existing TV wall mount
- 30mm step to position speakers in front of the TV
- Optimised for Sonos Trueplay
- Multipoint fixing points
- Includes extension arms for larger TV's
- VESA compatibility from 200 x 200 to 800 x 800
- Precision engineered from High Grade Steel
- Suitable for 40" to 80" TV's



Wall Mount for Sonos Beam

Manufactured from steel and finished in either black or white this practical design will enable you to securely mount your Sonos Beam to a wall. There are two fixing points to make sure the Beam stays in place and plenty of access to route the cables you need.

- Compatible with Sonos Beam Gen 1 & Gen 2
- Precision engineered
- Quick and easy to fit
- High grade steel construction
- Available in black or white



TV Mount Attachment for Sonos Beam

Designed to easily fit onto a full-motion, TV wall mount, this Flexson mount securely holds your Beam in place, while allowing it to move with the screen – meaning optimum performance with music, movies and more. The Flexson TV Mount Attachment for Sonos Beam is easy to fit into your existing flatscreen wall mount. It's the perfect partner for TVs from 32-65in – just add a Sonos Beam for wonderfully unified sound and vision.

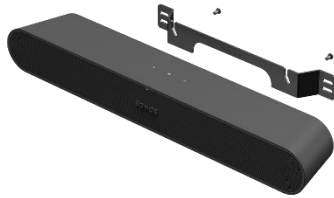
- Compatible with Sonos Beam Gen 1 & Gen 2
- Fix the Sonos Beam to any existing TV mount
- Precision engineered
- Quick and easy to fit
- Suitable for 32" to 65" TVs
- High grade steel construction
- VESA compatibility from 100 x 100 up to 400 x 400



Wall Mount for Sonos Ray

This mount is bespoke to suit the Sonos Ray and is precision engineered from High Grade Steel. The Flexson Wall Mount has multi-point fixing points and a one-part design for easy mounting. By requiring less parts, it also helps to reduce package waste.

- Allows you to position the Sonos Ray anywhere on the wall
- 30mm Step Design to position the sound in front of the TV
- Cable Management hole for chasing cables into wall
- One part design for easy installation and reduced packaging waste
- Multi-Point fixing points
- Precision engineered from High Grade Steel
- Available in black or white



TV Mount Attachment for Sonos Ray

Designed to fit easily on to any existing TV wall mount, the Flexson TV Mount for Sonos Ray. Featuring a 30mm step design, the soundbar is positioned just in front of the TV to optimise the full range of sound, while Flexson's coveted cable management system chases cables straight through a non-intrusive hole and into the wall for a tidy installation.

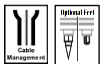
- Allows you to attach the Sonos Ray securely to any existing TV wall mount
- Bespoke, easy to fit design that holds the Sonos Ray securely
- Sonos Ray moves with your TV when using a full-motion mount
- Vertical and horizontal adjustment allows perfect alignment with screen
- 30mm Step Design to position the sound in front of the TV
- Includes extension arms for larger TVs
- VESA compatibility from 200x200 to 800x800
- Precision engineered from High Grade Steel
- Suitable for 40" to 80" TVs



2x Essentials Adjustable Floor Stand for Sonos ERA 100

The Flexson Adjustable Floor Stands for Sonos Era 100 can hold the speaker at a range of heights, allowing them to adapt to a range of potential Sonos set-ups. Whether you need to hold your speakers lower or higher than a standard floor stand would, the Flexson Adjustable Floor Stands are ready to serve, in style. They come in a twin pack: ideal for setting your speakers up as a stereo pair or as the left/right rear speakers in a surround-sound set-up with a Sonos Arc, Beam or Ray.

- Compatible with Sonos ERA 100
- Adjustable height for positioning anywhere
- Perfect for use in a 5.1 surround sound set-up
- Includes adjustable carpet spikes and sound isolating feet
- Designed to neatly hide cable entry
- Constructed from high grade steel
- Precision engineered in the United Kingdom
- Available in black or white



2x Essentials Adjustable Floor Stand for Sonos ERA 300

The Flexson Adjustable Floor Stands for Sonos Era 300 can hold the speaker at a range of heights, allowing them to adapt to a range of potential Sonos set-ups. Whether you need to hold your speakers lower or higher than a standard floor stand would, the Flexson Adjustable Floor Stands are ready to serve, in style. They come in a twin pack: ideal for setting your speakers up as a stereo pair or as the left/right rear speakers in a surround-sound set-up with a Sonos Arc, Beam or Ray.

- Compatible with Sonos ERA 300
- Adjustable height for positioning anywhere
- Perfect for use in a 5.1 surround sound set-up
- Includes adjustable carpet spikes and sound isolating feet
- Designed to neatly hide cable entry
- Constructed from high grade steel
- Precision engineered in the United Kingdom
- Available in black or white





Sonos Sub



Wall Mount for Sonos Sub

Flexson's bespoke bracket for the Sonos Sub allows you to wall mount your Subwoofer in the ideal place to sound - and look - great. The Flexson wall bracket is precision engineered to perfectly match the size, style and colour of the Sonos subwoofer. Like all Flexson Sonos products, the wall-mount bracket for the Sonos Sub allows for neat cable routing, easy fitting and flexible placement.

- Compatible with Sonos Sub
- Frees up valuable space
- Allows for discreet positioning
- High grade steel construction
- Precision engineered
- Quick and easy to fit
- Available in black



Audio Components

With Flexson, it's simple to keep audio components such as Sonos Port and Sonos Amp neatly installed as they work to bring traditional audio equipment into a wireless connected sound system.





Wall Mount for Sonos Amp

Mount it on a wall or even attach it to the rear of your TV – the Flexson Wall Mount for Sonos Amp allows you to best position your Sonos Amp whilst keeping things tidy. Once the steel plate is mounted to the wall, the Sonos Amp simply slides into position and is held securely. Cables can then be safely concealed within the stylish cable cover, which matches the colour of the Sonos Amp. The Flexson Wall Mount for Sonos Amp can also be fitted to the rear of a TV.

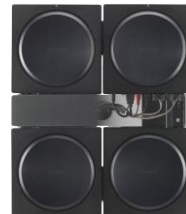
- Frees up valuable space
- Sonos Amp and cable cover can be inverted
- Fits to rear of a TV using VESA mounts
- Tidy design with cable covers and knock-outs
- Precision engineered
- Quick and easy to fit
- High grade steel construction



Wall Mount for 4 Sonos Amps

Free up space with the Flexson Wall Mount for 4 Sonos Amps, the perfect way to wall mount up to four Sonos Amps. Once mounted the Sonos Amps are quickly fitted. The clever hinged frame is designed to make cabling simpler and if required the connections are easily accessible once the install is completed. Once the frame is closed and secured with the security screw, the units cannot be removed. In addition, for extra security, a padlock can be fitted. From the front, the cables are concealed behind a colour matched cable cover.

- Compatible with four Sonos Amps
- Frame can be hinged left or right
- Rear access to all four units
- Can be securely locked and closed
- Quick and easy to fit
- High grade steel construction
- Designed to neatly hide cable entry
- Precision engineered





Dock for 4 Sonos Amps

The Flexson Dock holds up to four Sonos Amps, keeping your install looking compact and tidy. Once the unit is fitted to a wall or cabinet the four Sonos Amps simply slide in. The Sonos Amps then click into place and are held securely in position via clever retaining clips. These clips will allow the unit to be mounted underneath a cabinet if required. There is also enough space inside the Dock to neatly run cables from all four units. The robust steel construction is colour matched to the Sonos Amp.

- Compatible with four Sonos Amps
- Can be desk or wall mounted, or bolted to a cabinet
- Designed to neatly hide cable entry
- Precision engineered
- Quick and easy to fit
- High Grade steel construction



Wall Mount for Sonos Port

Once the steel plate is mounted to the wall, the Sonos Port simply slides into position and is held securely. A padlock (not supplied) can also be fitted to prevent unwanted removal.

- Frees up valuable space
- Can be secured with a padlock (not supplied)
- Precision engineered
- Mount to a wall or back of TV
- Quick and easy to fit



19" Rack Mount for Sonos Amp/Port

The Flexson rack mount allows you to securely and neatly install either 2 x Sonos Amps, 2 x Sonos Ports or 1 x Sonos Amp and 1 x Sonos Port side by side into a traditional 19-inch Rack. Designed entirely to work with Sonos Amp and/or Sonos Port. High grade steel is precisely laser cut with knock out sections that are easily pushed through to allow a neat and tidy installation. It's ideal for commercial installs in bars, restaurants and shops, as well as for home use providing a neat and tidy installation. Magnetic front cover allows for quick and easy installation whilst neatly covering up the installation once installed.

- Compatible with two Sonos Amps, two Sonos Ports or one Sonos Amp and one Sonos Port
- Universal design to fit into all conventional 19" racks
- Magnetic front fascia panel with knock out sections to tailor the installation
- Precision laser cut steel vents for heat dissipation
- Quick and easy to fit



Cables

To better suit an installation, whether floor standing or wall mounting, Flexson offers 35cm and 5m Power Cables.

After:





Short Power Cable for Sonos ERA, Five, Arc, Beam, Ray and Sub

Flexson's Short Power Cable for Sonos ERA, Five, Arc, Beam, Ray and Sub is a perfect solution if your speaker is close to a power socket. The standard Sonos power cable is 2 metres (6ft) long, which can leave excess trailing cable if your speaker sits close to the power socket. The Flexson Short Power Cable is a mere 35cm (13.8in) long, which allows for a far neater solution. Ideal for kitchens, tablespots and wall mounting.

- Compatible with Sonos ERA, Five, Arc, Ray and Sub
- Eliminates cable clutter
- Replaces existing mains cable
- 35cm (13.8in) long
- Perfect for countertops, tablespots, and wall mounting
- Ideal for use with Flexson Deskstands
- Available in black or white
- Available in EU, US and UK plug types



5M Power Cable for Sonos ERA, Five, Arc, Beam, Ray and Sub

The Flexson 5m Power Cable is the ultimate cabling solution, allowing more positional opportunities for your Sonos Speaker. Coming in black or white finishes to match your speaker, the 5m Power Cable is ideal for Flexson Floor Stands, replacing the existing mains cables for the Sonos ERA, Five, Arc, Ray and Sub. With the extra cabling length, you'll be able to find the perfect position for your Sonos speaker, replacing your old, ugly extension cables.

- Compatible with ERA, Five, Arc, Ray and Sub
- More placement options with longer cable length
- Replaces existing mains cable
- 5m (16ft) long
- Ideal for use with Flexson floor stands
- Available in black or white
- Available in EU, US and UK plug types